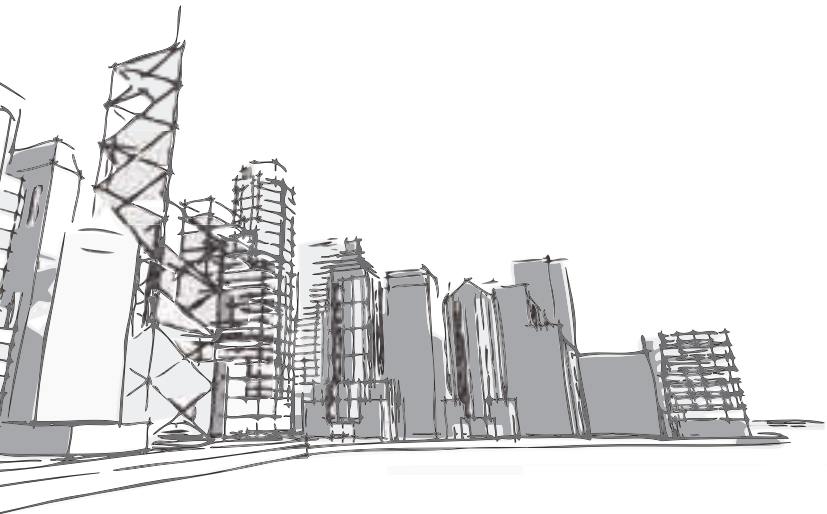




SHADE

FMG ir@s
INDUSTRIAL
SLABS



WHITE

CREAM

SHADE

 **FMG** INDUSTRIAL
SLABS

DOVE GREIGE

MOOR

ANTHRACITE

GREY

RUST

BLACK





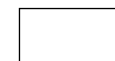
SHADE.white



120x60 - 48"x24"



60x60 - 24"x24"



60x30 - 24"x12"

White



P62322 120x60 - 48"x24"



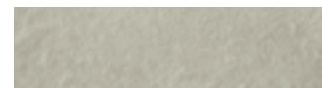
P66322 60x60 - 24"x24"



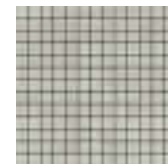
P63322 60x30 - 24"x12"



DIAGONAL STRIPED
DS62322 120x60 - 48"x24" R10



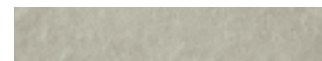
P15936 15x60 - 6"x24"



P30862 Plug
30x30 - 12"x12"



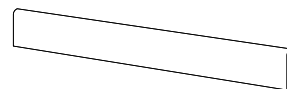
P30732 Stick
30x30 - 12"x12"



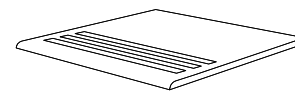
P16936 10x60 - 4"x24"



DIAGONAL STRIPED
DS63322 60x30 - 24"x12" R10
DST63322 60x30 - 24"x12" R11



P69322 Battiscopa 9x60 - 3"x24"



P33322 Gradino 30x30 - 12"x12"

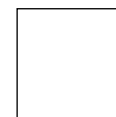




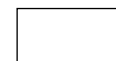
SHADE.cream



120x60 - 48"x24"



60x60 - 24"x24"



60x30 - 24"x12"

Cream



P62320 120x60 - 48"x24"



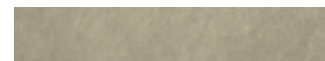
P66320 60x60 - 24"x24"



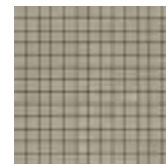
P63320 60x30 - 24"x12"



P15940 15x60 - 6"x24"



P16940 10x60 - 4"x24"



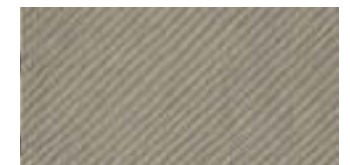
P30860 Plug
30x30 - 12"x12"



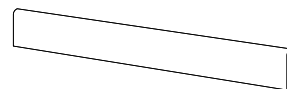
P30730 Stick
30x30 - 12"x12"



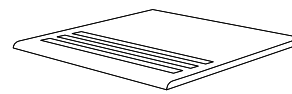
DIAGONAL STRIPED
DS62320 120x60 - 48"x24" R10



DIAGONAL STRIPED
DS63320 60x30 - 24"x12" R10
DST63320 60x30 - 24"x12" R11



P69320 Battiscopa 9x60 - 3"x24"



P33320 Gradino 30x30 - 12"x12"





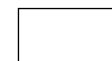
SHADE.dove greige



120x60 - 48"x24"



60x60 - 24"x24"



60x30 - 24"x12"

Dove Greige



P62318 120x60 - 48"x24"



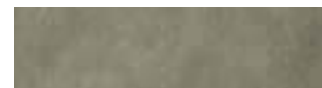
P66318 60x60 - 24"x24"



P63318 60x30 - 24"x12"



DIAGONAL STRIPED
DS62318 120x60 - 48"x24" R10



P15938 15x60 - 6"x24"



P30865 Plug
30x30 - 12"x12"



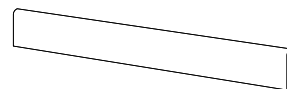
P30736 Stick
30x30 - 12"x12"



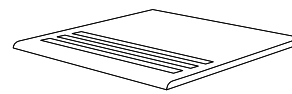
P16938 10x60 - 4"x24"



DIAGONAL STRIPED
DS63318 60x30 - 24"x12" R10
DST63318 60x30 - 24"x12" R11



P69318 Battiscopa 9x60 - 3"x24"



P33318 Gradino 30x30 - 12"x12"





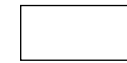
SHADE.moor



120x60 - 48"x24"



60x60 - 24"x24"

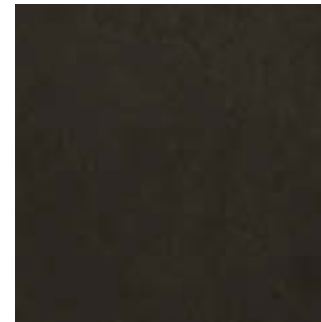


60x30 - 24"x12"

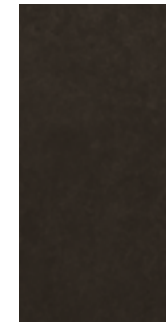
Moor



P62323 120x60 - 48"x24"



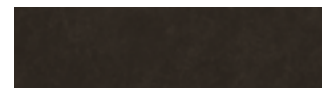
P66323 60x60 - 24"x24"



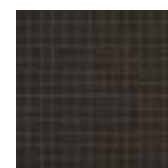
P63323 60x30 - 24"x12"



DIAGONAL STRIPED
DS62323 120x60 - 48"x24" R10



P15935 15x60 - 6"x24"



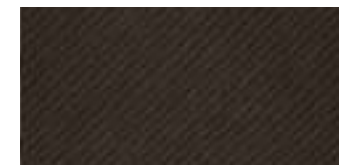
P30863 Plug
30x30 - 12"x12"



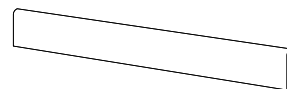
P30733 Stick
30x30 - 12"x12"



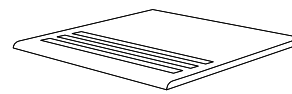
P16935 10x60 - 4"x24"



DIAGONAL STRIPED
DS63323 60x30 - 24"x12" R10
DST63323 60x30 - 24"x12" R11



P69323 Battiscopa 9x60 - 3"x24"



P33323 Gradino 30x30 - 12"x12"

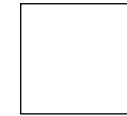




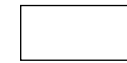
SHADE.anthracite



120x60 - 48"x24"



60x60 - 24"x24"

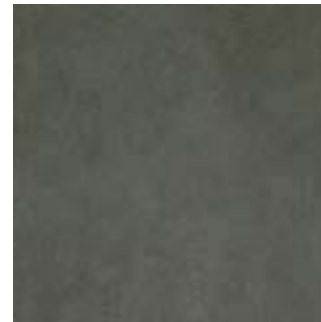


60x30 - 24"x12"

Anthracite



P62319 120x60 - 48"x24"



P66319 60x60 - 24"x24"



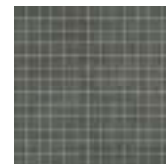
P63319 60x30 - 24"x12"



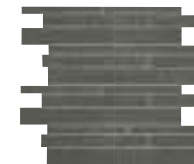
DIAGONAL STRIPED
DS62319 120x60 - 48"x24" R10



P15939 15x60 - 6"x24"



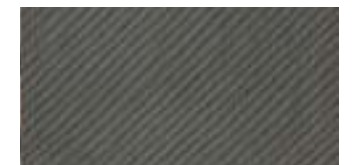
P30859 Plug
30x30 - 12"x12"



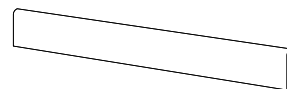
P30729 Stick
30x30 - 12"x12"



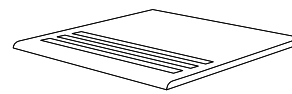
P16939 10x60 - 4"x24"



DIAGONAL STRIPED
DS63319 60x30 - 24"x12" R10
DST63319 60x30 - 24"x12" R11



P69319 Battiscopa 9x60 - 3"x24"



P33319 Gradino 30x30 - 12"x12"





SHADE.grey



120x60 - 48"x24"



60x60 - 24"x24"



60x30 - 24"x12"

Grey



P62324 120x60 - 48"x24"



P66324 60x60 - 24"x24"



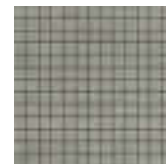
P63324 60x30 - 24"x12"



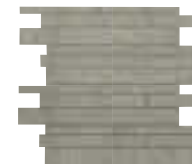
DIAGONAL STRIPED
DS62324 120x60 - 48"x24" R10



P15934 15x60 - 6"x24"



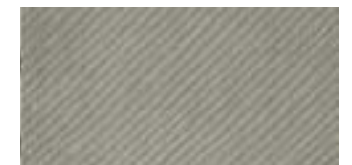
P30864 Plug
30x30 - 12"x12"



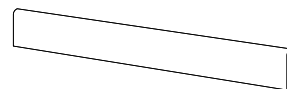
P30734 Stick
30x30 - 12"x12"



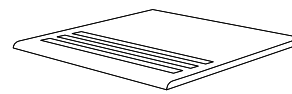
P16934 10x60 - 4"x24"



DIAGONAL STRIPED
DS63324 60x30 - 24"x12" R10
DST63324 60x30 - 24"x12" R11



P69324 Battiscopa 9x60 - 3"x24"



P33324 Gradino 30x30 - 12"x12"





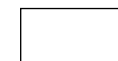
SHADE.rust



120x60 - 48"x24"



60x60 - 24"x24"



60x30 - 24"x12"

Rust



P62317 120x60 - 48"x24"



P66317 60x60 - 24"x24"



P63317 60x30 - 24"x12"



DIAGONAL STRIPED
DS62317 120x60 - 48"x24" R10



P15937 15x60 - 6"x24"



P30867 Plug
30x30 - 12"x12"



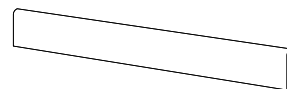
P30735 Stick
30x30 - 12"x12"



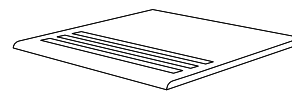
P16937 10x60 - 4"x24"



DIAGONAL STRIPED
DS63317 60x30 - 24"x12" R10
DST63317 60x30 - 24"x12" R11



P69317 Battiscopa 9x60 - 3"x24"



P33317 Gradino 30x30 - 12"x12"

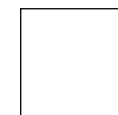




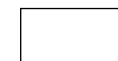
SHADE.black



120x60 - 48"x24"

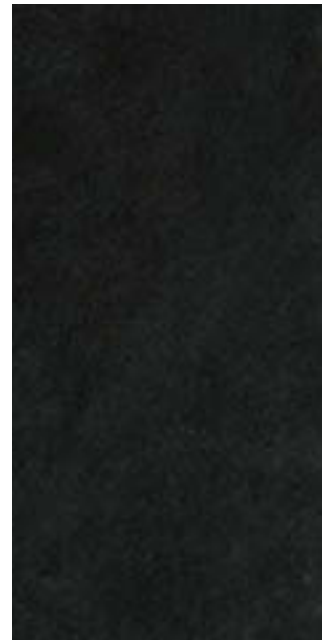


60x60 - 24"x24"

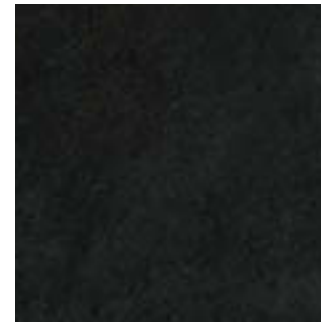


60x30 - 24"x12"

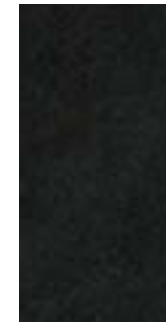
Black



P62321 120x60 - 48"x24"



P66321 60x60 - 24"x24"



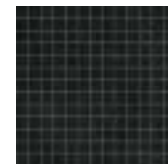
P63321 60x30 -24"x12"



DIAGONAL STRIPED
DS62321 120x60 - 48"x24" R10



P15941 15x60 - 6"x24"



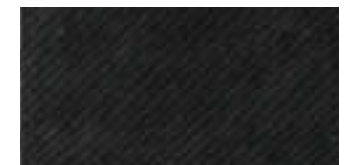
P30861 Plug
30x30 -12"x12"



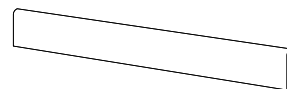
P30731 Stick
30x30 -12"x12"



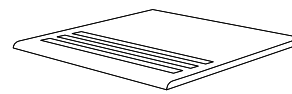
P16941 10x60 - 4"x24"



DIAGONAL STRIPED
DS63321 60x30 -24"x12" R10
DST63321 60x30 -24"x12" R11



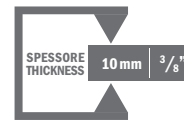
P69321 Battiscopa 9x60 - 3"x24"



P33321 Gradino 30x30 - 12"x12"

SHADE

Diagonal Striped



NATURALE R9

DIAGONAL STRIPED R10 A+B
R11 A+B+C





La nuova superficie **Diagonal Striped** con rigature trasversali a rilievo, proposta nei formato 120x60 e 60x30, nasce per offrire nuove possibilità progettuali e donare agli spazi un piacevole effetto tridimensionale.

The new Diagonal Striped surface featuring relief diagonal lines, presented in sizes 120x60 and 60x30, was created in order to provide new design options and to lend spaces an appealing three dimensional affect.

Die neue Oberfläche Diagonal Striped mit quer verlaufenden Relief-Streifen, die in den Formaten 120x60 und 60x30 angeboten wird, entsteht, um neue projektbezogene Möglichkeiten zu bieten und den Räumen einen angenehmen 3D-Effekt zu verleihen.

La nouvelle surface Diagonal Striped à rayures transversales en relief, disponible dans les formats 120x60 et 60x30, naît pour offrir de nouvelles possibilités conceptuelles et donner aux espaces un effet tridimensionnel plaisant.

Caratteristiche tecniche Technical features

PROPRIETÀ FISICO-CHIMICHE PHYSICAL-CHEMICAL PROPERTIES	TIPO DI PROVA STANDARD OF TEST	VALORE PRESCRITTO REQUIRED VALUE	VALORE MEDIO FMG FMG MEAN VALUE	ASTM STANDARD OF TEST	ASTM INDUSTRY STANDARDS	ASTM FMG RESULTS (as tested by Smith Emery laboratory)	
 Dimensioni Sizes	ISO 10545.2	Lunghezza e larghezza Length and width Spessore Thickness Rettilineità spigoli Linearity Ortogonalità Wedging Planarità Warpage	± 0,6% max ± 5% max ± 0,5% max ± 0,6% max ± 0,5% max	± 0,2% max ± 2% max ± 0,2% max ± 0,2% max ± 0,2% max	ASTM C-499	Average facial dimension < 1,5% Wedging ±1% - Warpage ±1% of any edge Range of thickness (inch.) < 0,04%	0,15% 0,014% - 0,33% 0,17%
 Assorbimento d'acqua Water absorption	ISO 10545.3		≤ 0,5%	0,04% *	ASTM C-373	Tile shall be impervious	< 0,05%
 Resistenza alla flessione Flexion resistance	ISO 10545.4	Modulo di rottura Modulus Carico di rottura Breaking strength	≥ 35 N/mm ² ≥ 1300 N	55 N/mm ² (561 Kg/cm ²) 2500 N			
 Resistenza all'abrasione profonda Deep abrasion resistance	ISO 10545.6		Volume ≤ 175 mm ³	120 mm ³	ASTM C-501	≥ 100	217
 Coefficiente di dilatazione termica lineare Coefficient of linear thermal-expansion	ISO 10545.8		≤ 9x10 ⁻⁶ °C ⁻¹	6,5x10 ⁻⁶ °C ⁻¹	ASTM C-1028		Meets or exceeds requirements (Please ask for individual test reports)
 Resistenza al gelo Frost resistance	ISO 10545.12	Non devono presentare rotture o alterazioni apprezzabili della superficie Must not produce noticeable alteration to surface		Non gelive Frost-proof	ASTM C-1026	No sample must show alterations to surface	Resistant
 Resistenza ai prodotti chimici Chemical resistance	ISO 10545.13	Non devono presentare apprezzabili segni d'attacco Chimico Must not produce noticeable signs of chemical attack		Non attaccate Not attacked	ASTM C-650 ASTM C-648	To 10% HCL Acid - No sample must show visible signs of chemical attack to 10% KOH Alkali 250 PSI or greater	Unaffected
 Resistenza alle macchie Stain resistance	ISO 10545.14		1 < X < 5	CLASSE 5 - CLASS 5 ** Macchie rimosse con acqua corrente calda (senza detergente) Stains removed by hot running water (without detergent)			
 Resistenza dei colori alla luce Color resistance to light	DIN 51094	Non devono presentare apprezzabili variazioni di colore Must not produce noticeable colour variation		Campioni inalterati in brillantezza e colore No change in brightness or colour of samples			
 Coefficiente di attrito (scivolosità) Friction coefficient (slipperiness)	DIN 51130	Metodo disponibile Test method available		R9 Superficie naturale Natural surface			
 Coefficiente di attrito (scivolosità) Friction coefficient (slipperiness)	BCRA REP CEC 6/81	Attrito soddisfacente Satisfactory friction 0,40 ≤ μ ≤ 0,74		0,42 - 0,75 **			

PIETRE NATURALI DI FABBRICA A TUTTA MASSA CON LE CARATTERISTICHE TECNICHE DEL PORCELLANATO FULL-BODY
MANUFACTURED NATURAL STONES WITH PORCELAIN TECHNICAL FEATURES

Classificazione secondo le norme UNI EN 14411 gruppo BIa o ISO 13006 Allegato G gruppo BI a UGL

Classification in accordance with UNI EN 14411 standards BIa group or ISO 13006 Annex G standards BI a UGL group

*** I prodotti con assorbimento < 0,5 sono classificati secondo le norme UNI CEN "Fully vitrified tiles" e secondo le norme ASTM "Impervious tiles"**
The products having an absorption < 0,5 are classified according to the UNI CEN standards "Fully vitrified tiles" and according to the ASTM standards "Impervious tiles"

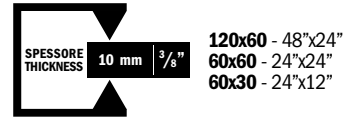
**** Varia secondo la finitura di superficie**
It can vary according to the surface finish

FMG FABBRICA MARMI E GRANITI® Certificazioni Certifications



conforme à
HQE®

SQ. : SQUADRATO - SQUARED



NATURALE **R9**

STRIPED **R10** A+B
STRIPED **R11** A+B+C

Pesi e imballi

Weights and packing

FORMATI SIZES	PEZZI X SCATOLA PIECES X BOX	KG X MQ KG X SQM	MQ X SCATOLA SQM X BOX	ML X SCATOLA LM X BOX	SCATOLE X PALETTA BOXES X PALLET	MQ X PALETTA SQM X PALLET	KG X PALETTA KG X PALLET
120x60 - 48"x24"	1	26,42	0,72	-	50	36,00	951,12
60x60 - 24"x24"	3	24,50	1,08	-	32	34,56	842,88
60x30 - 24"x12"	5	24,50	0,9	-	40	36,00	877,20
Listone 60x15 - 24"x6"	5	2,18 pz	0,45	-	-	-	-
Listone 60x10 - 24"x4"	5	1,45 pz	0,3	-	-	-	-
Plug 30x30 (2x2) - 12"x12" su rete - on net	4	2 pz	0,36	-	-	-	-
Stick 30x30 - 12"x12" su rete - on net	4	2 pz	0,36	-	-	-	-
Battiscopa 9x60 - 3"x24"	10	1,35 pz	0,54	-	-	-	-
Gradino 30x30 - 12"x12"	4	2,18 pz	0,36	-	-	-	-

Project:
FMG MKTG DEPT.
OMNIADVERT SpA

Printing:
ARTI GRAFICHE CASTELLO - VIADANA (MN)

PC0231 9/14



Divisione FMG

Via Ghiarola Nuova, 119 - 41042 Fiorano Modenese (Mo) Italy

tel. +39 0536 862111 fax +39 0536 862452

www.irisfmg.com